

Example 1 - Turfgrass:

Lot Size: 6000 sqft

House Size: 1500 sqft

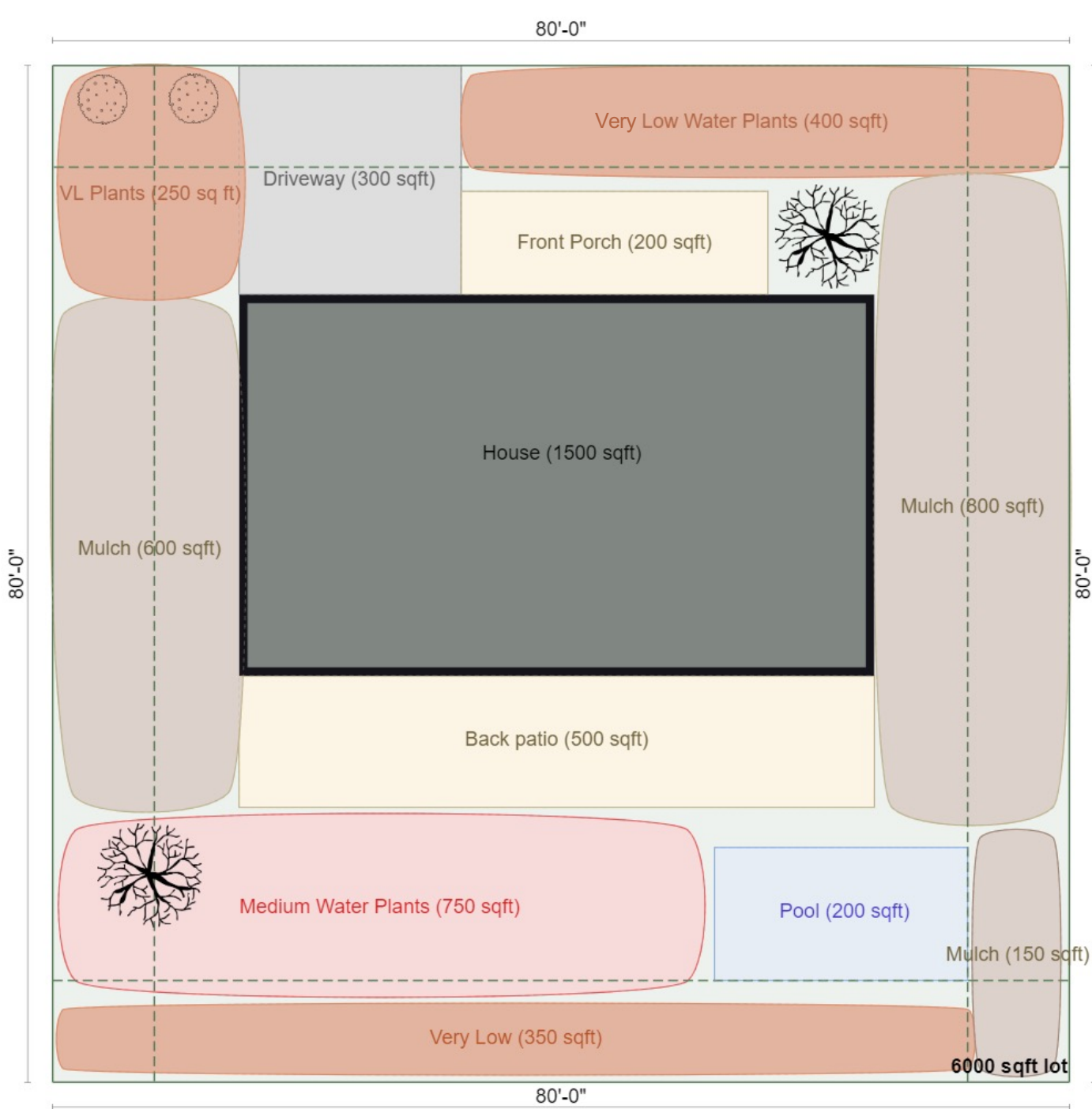
Total Landscaped Area: 3500 sqft

Total Living Plant Material: 875 sqft
(25% of total landscaped area)

Total Non-Living Plant Material: 2,625 sqft
(75% of total landscaped area)

Plant Material or Feature	Sqft	Plant Factor	Notes
Cool season turfgrass	350	0.80	10% of total landscaped area
Low water plants	225	0.20	7% of total landscaped area
Very low water plants	300	0.00	8% of total landscaped area
Mulch (non-living)	2,625	-	75% of total landscaped area

Water Budget: 14.6 gal/ sqft/ season



Example 2 - Pool:

Lot Size: 6000 sqft

House Size: 1500 sqft

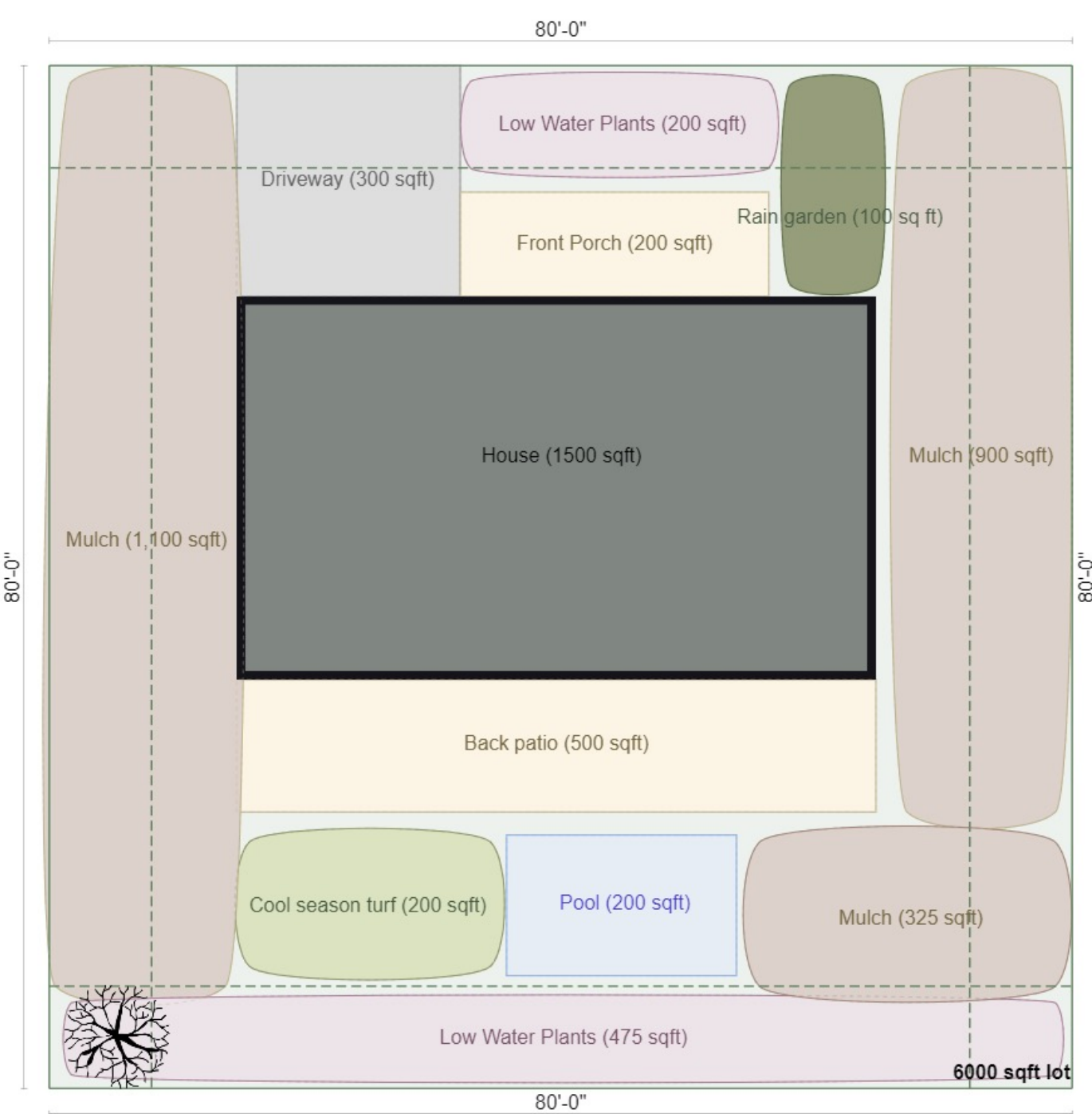
Total Landscaped Area: 3500 sqft

Total Living Plant Material: 1750 sqft
(50% of total landscaped area)

Total Non-Living Plant Material: 1,550 sqft
(44% of total landscaped area)

Plant Material or Feature	Sqft	Plant Factor	Notes
Swimming pool	200	0.80	6% of total landscaped area
Medium Water Plants	750	0.50	21% of total landscaped area
Very Low Water Plants	1000	0.00	29% of total landscaped area
Mulch (non-living)	1,550	-	44% of total landscaped area

Water Budget: 9.1 gal/ sqft/ season



Example 3 – Pool, Turfgrass, & Special Feature:

Lot Size: 6000 sqft

House Size: 1500 sqft

Total Landscaped Area: 3500 sqft

Total Living Plant Material: 875 sqft
(25% of total landscaped area)

Total Non-Living Plant Material: 2,425 sqft
(69% of total landscaped area)

Plant Material or Feature	Sqft	Plant Factor	Notes
Swimming pool	200	0.80	6% of total landscaped area
Cool season turfgrass	200	0.80	6% of total landscaped area
Low Water Plants	675	0.20	19% of total landscaped area
Mulch (non-living)	2,425	-	69% of total landscaped area
Rain Garden*	100	-	+2 gal/sqft

Water Budget: 16.2 gal/ sqft/ season

* Special feature incentive → **14.2 gal/ sqft/ season**