



APPENDIX A – MUNICIPAL PROFILE

Creating a municipal profile of who provides the water, where it's from and who makes decisions can help provide some baseline understanding of the water, wastewater and/or stormwater systems. Places to source information from include:

- The utility's website if it has one
- Census.gov
- Department of Health
- Regional Environmental Finance Center
- Annual Drinking Water Quality Report
- Informational interview with utility staff

Below is an example municipal profile completed at the beginning of the planning process to help inform the customization of the Community Water Academy. Individual names and contact information have been removed.

EXAMPLE: FULTON, AR CREATED 1/20/2023

Water Provider:

Fulton Water Department, a.k.a. Fulton Waterworks, a.k.a. Fulton Water. A small municipal-owned public water system.

Water Service Area/Jurisdiction:

Town of Fulton, Hempstead County, Arkansas

Type of Water Provider:

- a) Retail Only
- b) Drinking Water and Wastewater (with different service areas for each, see below)
- c) Municipal water services only

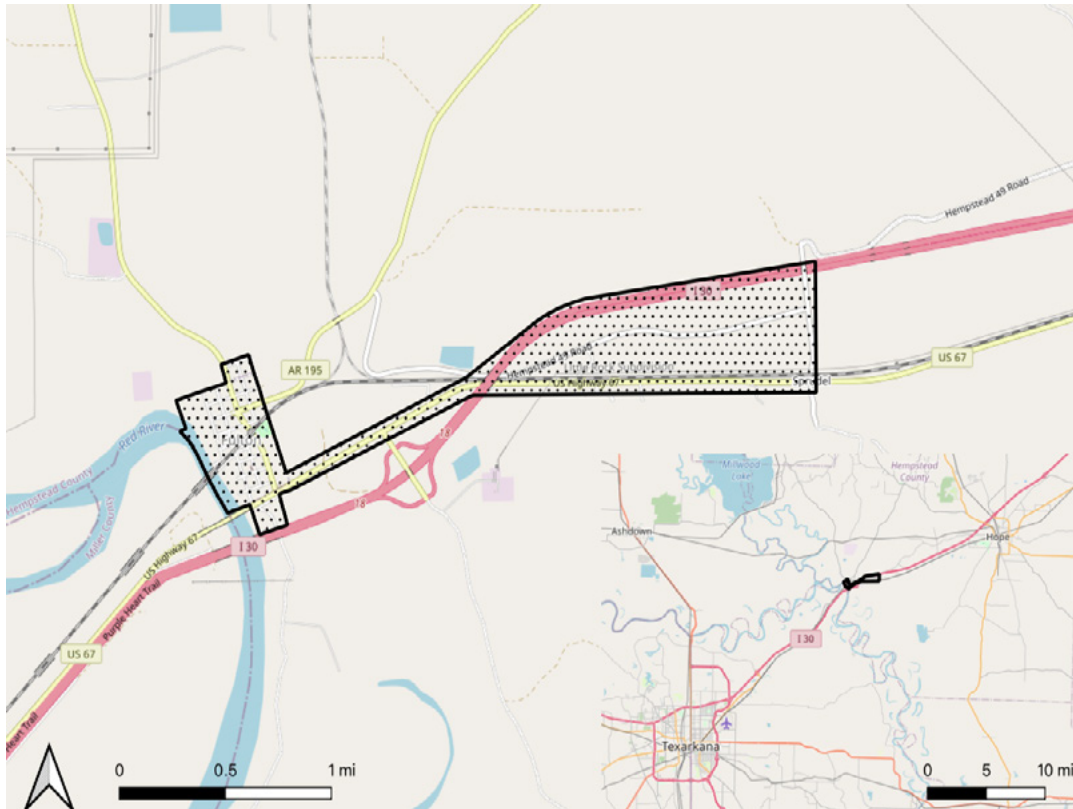
Water Service Facts:

Location: Fulton is located in Hempstead County in southwestern Arkansas, roughly halfway between Texarkana and Hope, at the junction of Arkansas Highway 355 and Interstate 30, on the Red River.

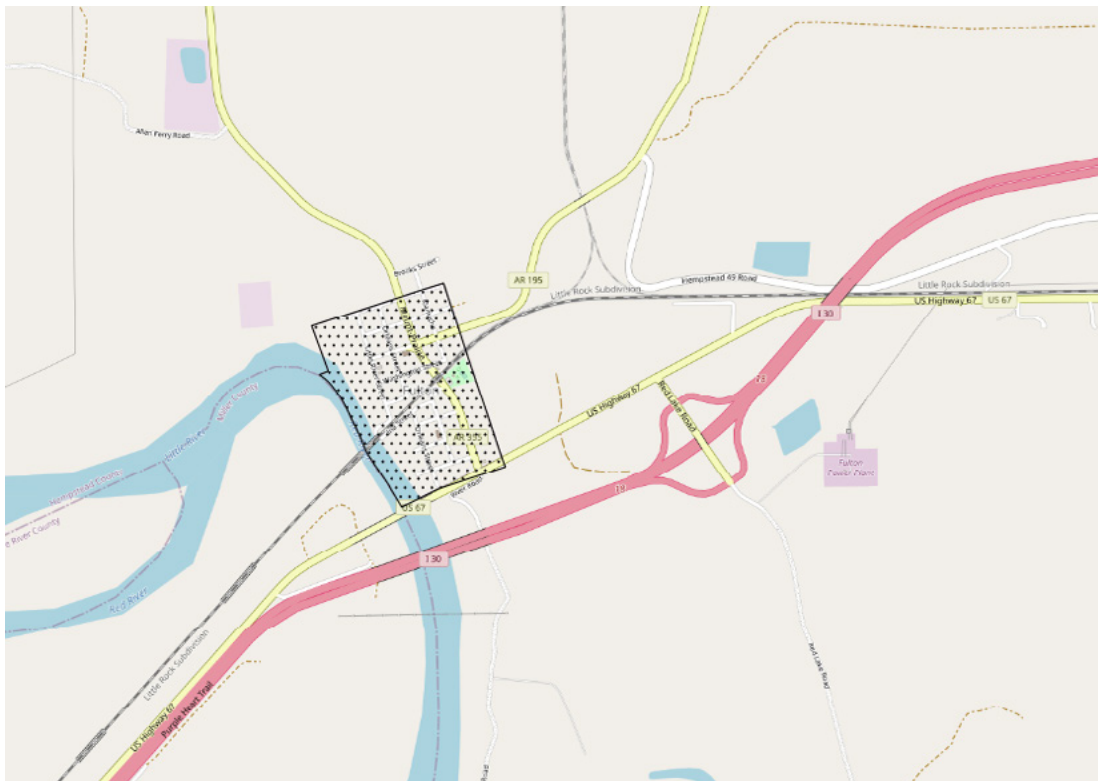
Service Area Size:

Fulton Water serves an area of 1.0 sq. mi. with drinking water, and a smaller 0.20 sq. mi. area with wastewater services. Wastewater services are restricted to the town of Fulton—see maps on the following page.

A map of Fulton Water’s drinking water service area. Inset: Fulton Water’s service area situated between Texarkana and Hope, AR.



A map of Fulton’s wastewater service area.



Population:

- [Arkansas Dept of Health](#) reports a service population of 365.
- UNC EFC study estimates 365.
- Decennial Census established a population of 115 for Fulton town proper (only the westernmost portion of the service area) in 2020, ACS 2021 census estimated 181±70.

Service Connections:

148 according to an [UNC Environmental Finance Center study](#).

Average Annual Water Use (Demand):

[Arkansas Dept of Health reports](#) an average demand of 65368 GPD, or an annual demand of ~2.39 million gallons.

Average Gallons Per Capita Per Day (GPCD):

Using the figures provided by Arkansas Dept of Health, we can calculate 179 GPCD.

Physical Sources of Water Supply:

Water is sourced from two local groundwater wells. The [2021 Drinking Water Quality Report](#) indicates that the wells pump from the Nacatoch Sand Aquifer.

Water Supply Situation:**a) Secure/Vulnerable?**

- Low to medium risk of contamination, according to the [2021 Drinking Water Quality Report](#). The Arkansas Department of Health has completed a Source Water Vulnerability Assessment for Fulton Water, but the complete document is not available online.
- A 2012 review of water pollution reports ([NYTimes](#)) found levels of lead above health guidelines but below legal limits.
- **Low risk of subsidence** in the greater Nacatoch Sand Aquifer.

b) Availability of surplus supply?

- [ADH lists](#) System Maximum Demand as 79000 GPD, 120% of the average.

c) Ability to develop new sources of supply?

- Unknown, likely limited by financial capacity although proximity to Red River may provide a potential new source of supply if necessary.

d) # years of storage capacity?

- Aquifer appears unlikely to be depleted.

e) Drought resilience?

- Drought risk is relatively high according to the [National Risk Index](#), as is social vulnerability. However, groundwater sources are likely not at risk from drought in the short to medium term.

f) Fire threat high/low?

- Very Low according to the [National Risk Index](#).

g) Price of Water: High/Low?

- Low, compared to other small utilities in Arkansas. [An UNC EFC study](#) found that as of August 2020, Fulton's water prices were in the lowest 10% among Arkansas water utilities with fewer than 500 accounts.

Water Decision Makers

a) Water Provider’s Decision Making Body:

→ Town of Fulton Council – acts in its capacity as the water board for Fulton Water Works

b) Individual Members of Decision Making Body

CITY COUNCIL MEMBERS					
Title	First Name	Middle	Last Name	Phone	Email
Mayor					
Councilmember					
Councilmember					
Councilmember					
Councilmember					
Councilmember					

General District Phone # - [Insert phone number] / Utility Email address? - [Insert email address]

a) Executive Water Management Staff

→ Water Superintendent – [Insert name and contact information] [Source:]

→ Operator; Emergency Contact – [Insert name and contact information] [Source:]

b) Other Key Councils/Boards associated with the utility?

→ Community organization: [Insert name of community organization and contact information]

- Project lead – [Insert name and contact information]

Other Info:

a) In 2021, the American Rescue Plan Act (ARPA) Steering Committee approved \$270m to the Ark. Dept. of Ag. for water, wastewater, and stormwater projects. Hempstead County received funding for various water improvement projects. ANRC approves funds for local water and waste/water projects, Southwest Arkansas Radio, <https://southwestarkansasradio.com/anrc-approves-funds-for-local-water-and-waster-water-projects/> (last visited Jan. 24, 2023).

b) Poverty rate is 21.3%.

[Source: UNC Environmental Finance Center AR Water and Wastewater Rates Dashboard]

c) 24.6% of residential customers had less than \$25k in annual income.

[Source: IB Environmental Affordability Assessment]

- d) Total pop. approx. 181.
 → 64 male, 117 female.
 → Approx. 8 people under 18yo.
 → Approx. 173 people are voting age 18+.

[Source: <https://data.census.gov/table?q=Fulton+town,+Arkansas&tid=ACSDP5Y2021.DP05>]

Basic Geography/Demographic Facts

a) Racial Profile:

- Approx. 94 people identified as white.
 → 85 identify as Black or African American.
 → Approx. 2 identified as White and American Indian.

[Source: <https://data.census.gov/table?q=Fulton+town,+Arkansas&tid=ACSDP5Y2021.DP05>]

b) Median Age: 59 years old

c) Median Household Income: \$22,188

[Source: UNC Environmental Finance Center AR Water and Wastewater Rates Dashboard]

d) Housing:

- Total households: 109
 → Avg. household size: 1.66
 → 1-unit structures = 81.7%
 → Mobile homes = 18.3%
 → Owner-occupied = 83.5%
 → Rent-occupied = 16.5%

[Source: <https://data.census.gov/table?q=Fulton+town,+Arkansas&tid=ACSST5Y2021.S1101>]

Other websites of interest:

Arkansas Municipal League on Fulton: <https://local.arkansas.gov/local.php?agency=fulton>