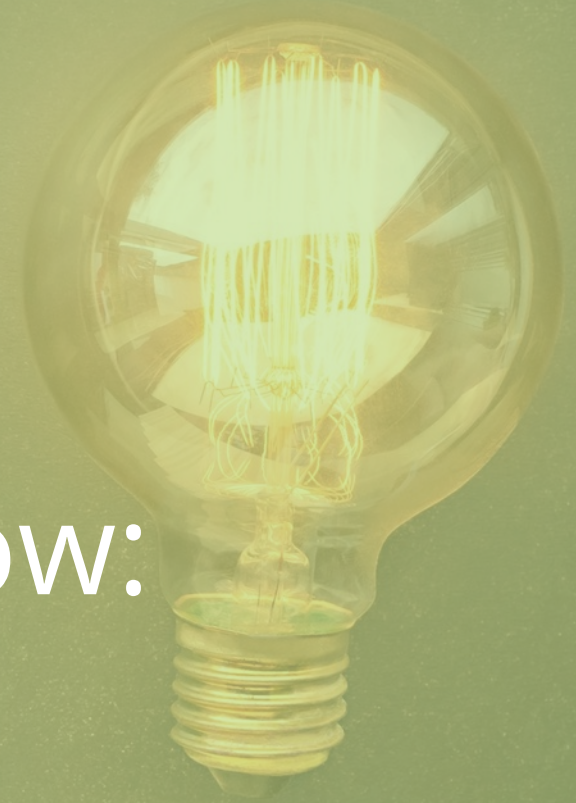


Emerging Leaders Then and Now: Stories of Professional Development and Growth after WaterNow's Emerging Leader Award



August 14, 12pm PT



Music: www.bensound.com 

Today's Panelists



LILY LOPEZ

Director of External Affairs
Walnut Valley Water District



JENYFFER VASQUEZ

Principal Water Resource Specialist
Calleguas Municipal Water District



EMERSON O'DONNELL

Program Manager
WaterNow Alliance
Moderator

Agenda

- Overview of WaterNow's Emerging Leaders Program
- Introductions and Panel Discussion
- Audience Questions
- Closing Thoughts



PLEASE COMPLETE OUR WEBINAR EVALUATION!

OUR MISSION

ENGAGE

our growing network and connect them to opportunities, ideas, data, resources and one another

ADVOCATE

for a sustainable water future by eliminating barriers and advancing solutions through our policy work

DEMONSTRATE

success by showcasing strategies that communities can replicate and scale

A forum and network of local water leaders advancing sustainable, affordable, equitable and climate resilient water strategies



EMERGING LEADER AWARDS

Recognizing and supporting the next generation of water leaders

WATERNOW ALLIANCE

Panel Discussion



Lily Lopez

**Director of External Affairs
Walnut Valley Water District**

Lily Lopez serves as the Director of External Affairs & Sustainability at Walnut Valley Water District (WVWD). As a young Latina professional in the water industry, she answered the call from her dream job and loves that every day is an opportunity to learn something new and develop meaningful connections with community members, industry professionals, and water enthusiasts. Lily is committed to being an active member of solution-driven teams that seek to solve some of the biggest challenges facing the water industry. One of Lily's passion projects is the Young Professionals Development Program catered to the YPs at WVWD. Her dedication to transformative solutions led her to apply to the TWLA cohort to not only continue learning from her peers, but to better serve and elevate the WVWD workforce and community.

She graduated in 2014 from the University of California, Santa Barbara, with a degree in political science. Born and raised in Southern California, Lily enjoys trips to Disneyland, traveling, and is a self-proclaimed foodie.

WALNUT VALLEY
WATER DISTRICT

WALNUT VALLEY
WATER DISTRICT

核桃市華人協會
CAAW



Dedicated to meeting the water supply needs
of the communities we serve.

dedicate
water sup
communi

f @WVV

NTD

76
anniversary



STAGE 2
WATER SUPPLY
SHORTAGE

HOW TO GET BY
UNTIL YOU HAVE MORE

IMPORTANT NOTICE

CONSTRUCTION
METER

Factor in the amount of water used for irrigation, pool, hot tub, etc. to determine how much water you will need for your water metering purposes.
1 CCF = 748 gallons





社區水利用
邀您一起
惜水節
Community Water Festival

Community Water Festival

Community Water Festival

Community Water Festival

Suzanne Middle School
華裔家長會
Chinese American Parents Association

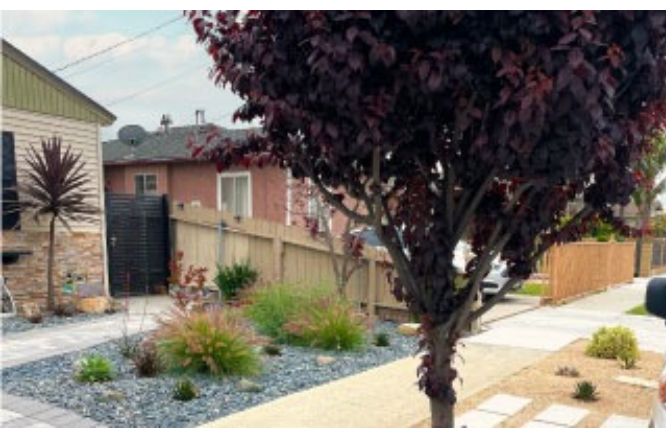




Jenyffer Vasquez
Principal Water Resource Specialist
Calleguas Municipal Water District

Jenyffer Vasquez is the Principal Water Resource Specialist for Calleguas Municipal Water District. In this role, she engages in planning and implementing various programs and projects within the District's Water Resources department, including agency annexations, water use planning and efficiency, and data management, reporting and compilation. These programs help support the District's mission to provide the service area with a reliable supplemental supply of regional and locally developed water in an environmentally and economically responsible manner to roughly three quarters of Ventura County residents.

Jenyffer received a B.A. in Environmental Science and Policy from California State University, Long Beach. She holds a Water Use Efficiency Practitioner Certification with the American Water Works Association (AWWA). Additionally, she is a board member with the California Water Efficiency Partnership (CalWEP), graduated with AWWA and WaterNow's Transformative Water Leadership Academy (TWLA) in 2023, and completed an online Water Distribution System Operation course with Sacramento State.



West Basin Municipal Water District

Grass Replacement



Chat with Us!

Ask a staff member your water saving questions.

2022

CalEPA Best Practices & Guidance on Language Access Services for Persons with Limited English Proficiency





Pollution Burden

- Ozone
- PM2.5
- Diesel PM
- Drinking Water
- Children's Lead Risk from Housing
- Pesticides
- Toxic Releases
- Traffic
- Cleanup Sites
- Groundwater

Population Characteristics

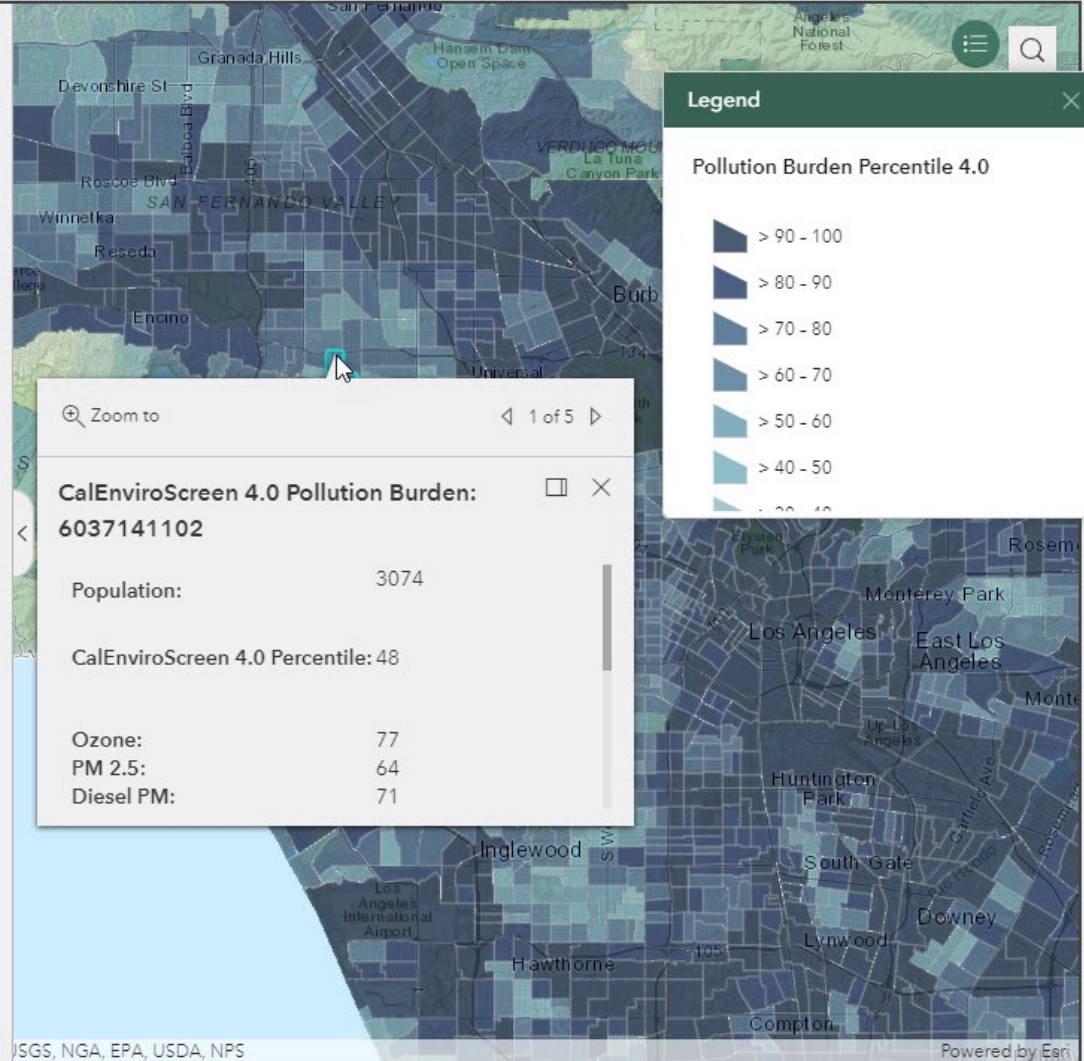
- Asthma
- Cardiovascular Disease
- Low Birth Weight
- Education
- Housing Burden
- Linguistic Isolation
- Poverty
- Unemployment

Overall CalEnviroScreen scores are calculated from the scores for two groups of indicators: Pollution Burden and Population Characteristics.

This map shows the combined Pollution Burden scores, which is made up of indicators from the Exposures and Environmental Effects components of the CalEnviroScreen model. Pollution Burden represents the potential exposures to pollutants and the adverse environmental conditions caused by pollution.

To explore this map, zoom to a location or type an address in the search bar. Click on a census tract to learn more about the indicator data. The 12 Pollution Burden indicator maps can be viewed by clicking on the tabs across the top. Click on the Population Characteristics tab at the very top to access the eight Population Characteristics indicators maps.

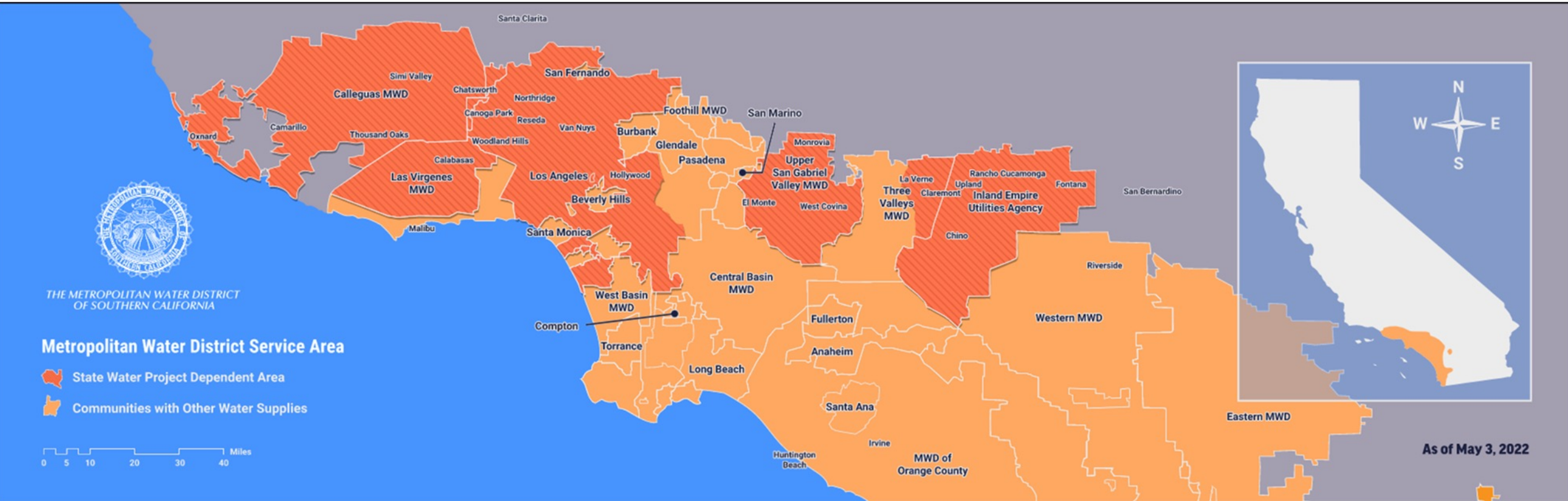
A draft [report](#) with detailed description of indicators and methodology and downloadable results is available at the [CalEnviroScreen 4.0 website](#).



Turnkey Turf Transformation Program



Turnkey Turf Transformation Program



60 Communities, 3 Counties

Turnkey Turf Transformation Program (T3) Components



Transforming Non-Functional Turf

- ✓ Free Basic NFT Makeover for selected public sector properties
- ✓ Extra design attributes at property owner's cost



Public Relations Campaign

- ✓ Multiplier effect for water savings
- ✓ Highly visible properties



Water Savings Study

- ✓ Estimate Savings with completed surveys
- ✓ Study Validate Savings

Panel Discussion

The background of the slide is a dense, overlapping collage of colorful sticky notes. The colors include shades of blue, green, purple, and yellow. Each sticky note has a large, dark blue question mark drawn on it. The notes are scattered across the frame, creating a textured and busy visual effect.

AUDIENCE Q&A

WATERNOW ALLIANCE

JOIN THE ALLIANCE

LEARN MORE AND SIGN UP

www.waternow.org/join-the-leaders



WATERNOW ALLIANCE



Thank You!

Jenyffer Vasquez

JVasquez@calleguas.com

Lily Lopez

llopez@walnutvalleywater.gov

Emerson O'Donnell

eo@waternow.org

